

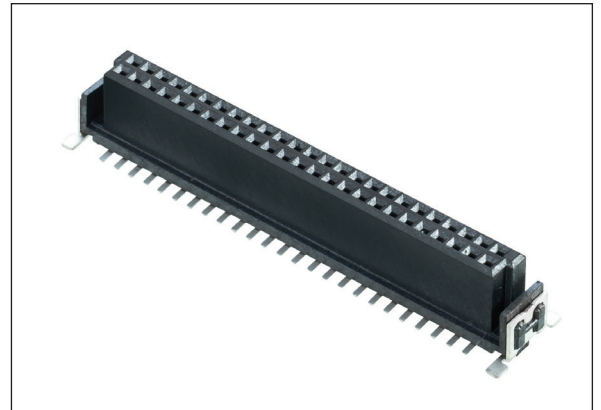
Archer Kontrol Robust Board-to-Board Connectors

Increased reliability for industrial applications

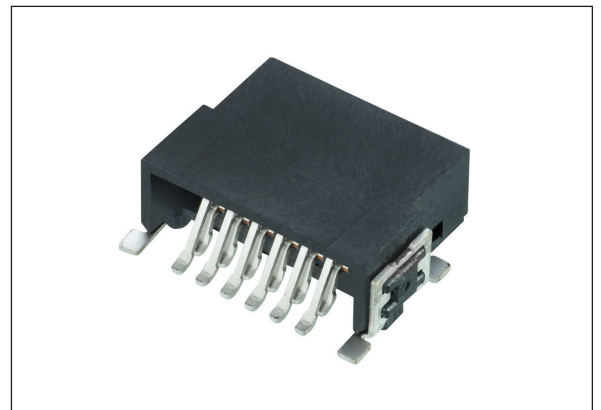
Harwin's new Archer Kontrol range of compact board-to-board 1.27mm pitch connectors offers designers a robust and flexible connection choice for their applications.

The new Archer Kontrol connectors are available in horizontal and vertical orientations with pin contacts ranging from 12 to 80. Different height options for vertical models are also available in both male and female styles.

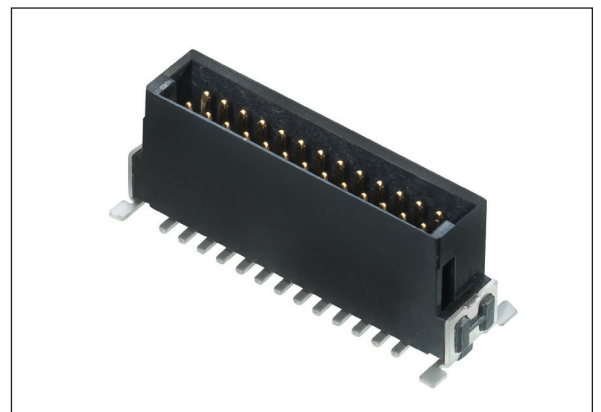
These connectors can assist with blind mating and offer 1.2A per contact.



50 pin Vertical Female



12 pin Horizontal



26 pin Vertical Male

Features and Benefits

Vertical and Horizontal ranges available in both male and female	Complete flexibility of edge-to-edge, parallel board-to-board, or mother-daughterboard right-angle configurations
Surface mount, including hold-down solder tabs	Space saving, enables easy automation and robustness in retention to the PCB
Tape and reel packaged	For factory automation
Fully shrouded connector system	Can take lateral and twisting forces that can be suffered during vibration environments, assists with blind mating
Different heights and pin combinations available	Design flexibility for board stacking connectors, with vertical stacking height variations

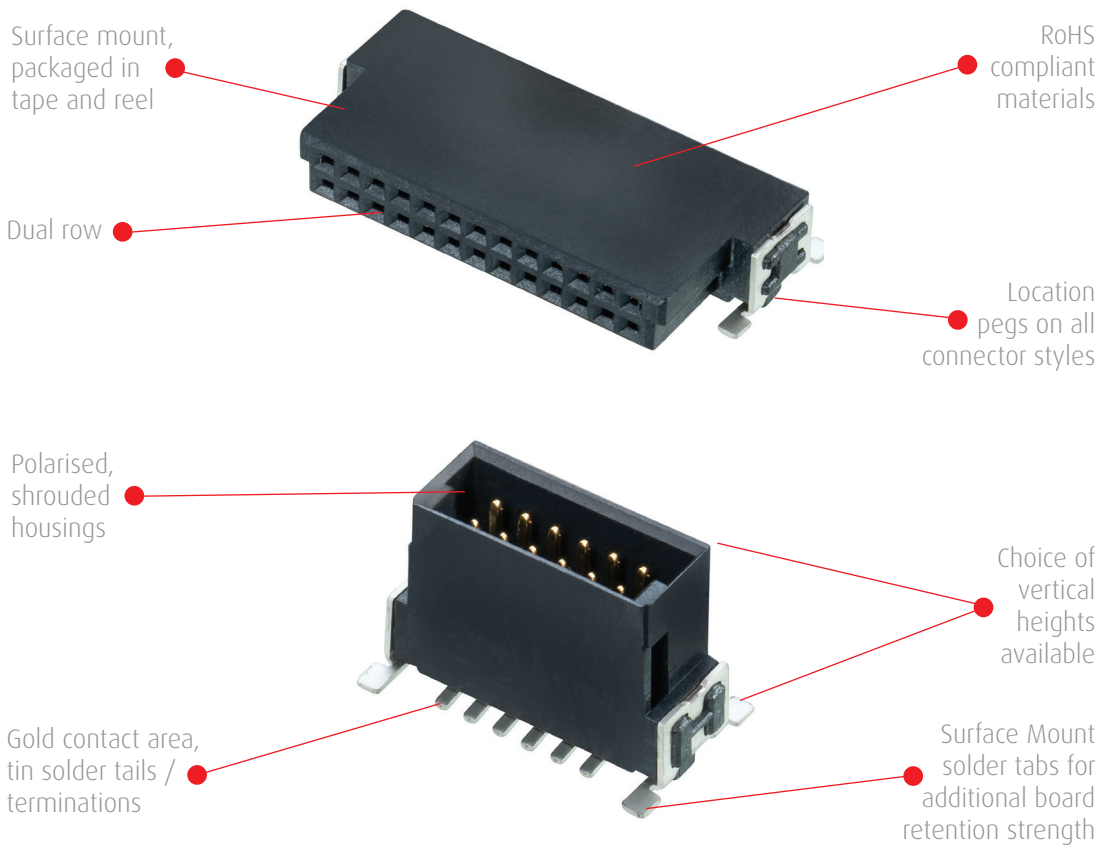
Key Applications

Industrial equipment	Factory equipment, production line controls, drive units for large scale installations
Handheld equipment	IOT markets, portable monitoring equipment, data collection
Large scale monitoring and control	Mobile maintenance and display control systems, trackside and roadside monitoring

Archer Kontrol Robust Board-to-Board Connectors

Increased reliability for industrial applications

Product Features



Specifications

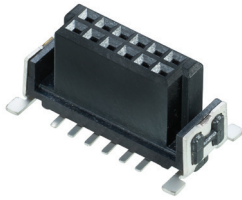
Electrical		Mechanical & Environmental		Physical	
Current rating	1.2A Max per contact	No. of Operations	500	Packaging	Tape & Reel (pick and place cap on vertical connectors)
Contact resistance	25mΩ	Temperature Range	-55°C to +125°C	Contact Base Material	Phosphor Bronze
Insulation resistance	1000MΩ Min	Insertion Force	0.8N Max per contact	Finish	Gold on contact area, tin on tails, over nickel
Voltage proof	500V AC for 1 minute	Withdrawal Force	0.2N Min per contact	Housing	High Temperature LCP, UL94V-0

Archer Kontrol Robust Board-to-Board Connectors

Increased reliability for industrial applications

Vertical Configuration

Female

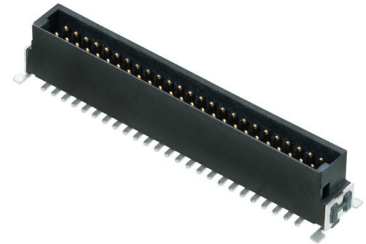


M55-60hxx42R

h = Height

Female	Male
0 = 6.25mm	0 = 6.75mm
1 = 9.05mm	1 = 8.25mm
2 = 13.65mm	2 = 9.85mm
xx = Total number of contacts	
12, 16, 20, 26, 32, 40, 50, 68, 80	

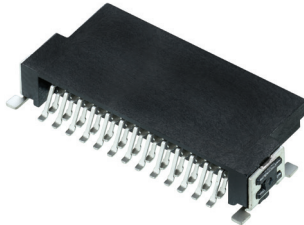
Male



M55-70hxx42R

Horizontal Configuration

Female



M55-610xx42R

xx = Total number of contacts

12, 16, 20, 26, 32, 40, 50, 68, 80

Male



M55-710xx42R

Female Connector Part Number	Male Connector Part Number	Mating Height
M55-600xx42R	M55-700xx42R	8.00mm
M55-600xx42R	M55-701xx42R	9.50mm
M55-600xx42R	M55-702xx42R	11.10mm
M55-601xx42R	M55-700xx42R	10.80mm
M55-601xx42R	M55-701xx42R	12.30mm
M55-601xx42R	M55-702xx42R	13.90mm
M55-602xx42R	M55-700xx42R	15.40mm
M55-602xx42R	M55-701xx42R	16.90mm
M55-602xx42R	M55-702xx42R	18.50mm

Total Mating Length for Horizontal Connectors (M55-610xx42R to M55-710xx42R): 15.80mm

Additional Literature

[Product Training Module >>](#)

[YouTube >>](#)

[Component Specification >>](#)

[Catalog Pages >>](#)